

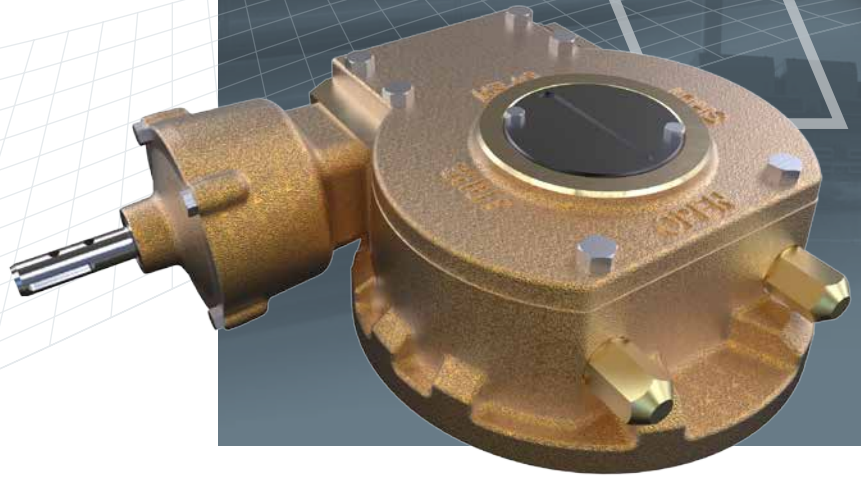
rotork®

Gears

NEW PRODUCT LAUNCH

BR Series

Bronze worm gears for steam distribution applications in man holes and vaults



Quality Design

The BR series gear operators are manufactured from high quality cast aluminum bronze and Arcor treated stainless steel materials and designed for extended life operation of metal seated butterfly valves in corrosive man hole and vault steam distribution environments where road salts, standing water and elevated temperatures are common.

Product Availability

BR series gears are available on new valves or as retrofit kits for existing valves.

Features

- Torque range to 61,995 lbf.in

Environmental Specification

- Temperature range +392 °F

Material Specification

Description	Material
Gear case / top cover plate	Cast Bronze C95800
Hand wheel / op nut	Cast Bronze C95800
Input shaft	Monel (Super Duplex with PR unit)
Fasteners	Super Duplex
Position indicator	H59-1 BRASS
Quadrant	Bronze C95800
O-rings	Viton
Grease	Hi temp grease
Gasket	Hi temp silicone sealant
Stop bolts	Super Duplex
W nut	HPb58-3 BRASS
Stop bolt washers (O-ring)	Viton